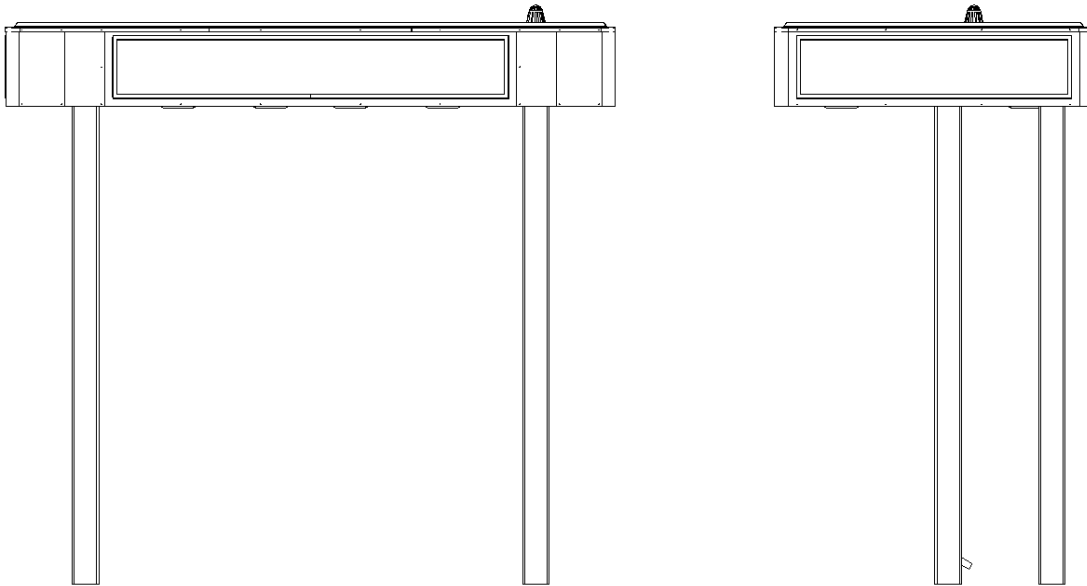




645 West 200 North, North Salt Lake, UT 84054
(801) 936-8082 phone • (801) 936-1563 fax
www.companionsystems.com

OWNERS MANUAL

Series 5575, 5576



1. WARRANTY INFORMATION

1.1. Limited New Product Warranty

- 1.2. Products produced by Companion Systems Inc. (CSI) are covered by warranty.
- 1.3. This warranty gives you specific legal rights, and you may also have other rights, which vary from state to state.
- 1.4. Warranty-related claims or questions may be made by calling CSI Customer Service at 800-258-8082.

2. Maintenance Program

2.1. Preventive Maintenance Plan

2.1.1. Quarterly

- 2.1.1.1. Wash the exterior of the unit with soap and water to remove dust, dirt and other debris.
- 2.1.1.2. Inspect the electrical system, remove any debris accumulation around the fixtures and lamp sockets
- 2.1.1.3. *****Caution*** If a problem is found disconnect the electrical and "lock out/tag out" the unit until repairs have been made.**
- 2.1.1.4. Remove all debris from roof drains and from around the canopy.

2.2. Annually

- 2.2.1. Replace all lamps as needed. Refer to the light replacement schedule which has been established by the bank.
- 2.2.2. Inspect the electrical and all lighting fixtures for damage and irregular wear. This includes, but is not limited to, the lamp sockets, conduct, wiring, switches, and all other electrical components. Repair and/or replace the damage or defective components.

*****Caution*** If a problem is found disconnect the electrical immediately and "lock out/tag out" the surround until repairs have been made.**
- 2.2.3. Inspect all gaskets for damage, replace as necessary.

2.3. Lamp Replacement Guidelines

- 2.3.1. Always inspect the socket for damage or wear when replacing lamps.

*****Caution*** If a problem is found disconnect the electrical immediately and “lock out/tag out” the surround until repairs have been made.**

2.3.2. Removing Lamps – The sockets used for these lamps are a twist lock type. To remove the lamp, apply a twisting motion to the lamp until the pins disengage from the sockets. Carefully remove the lamp from the socket.

2.3.3. Installing Lamps – Place the pins of the lamp in sockets. Once the pins have been correctly installed in the sockets twist the lamp 90 degrees until the pins engage the connectors of the sockets.

*****Caution*** Make sure that both pins are engaged correctly in the socket before locking the lamp in place.**

3. INSTALLATION INSTRUCTIONS

3.1. SITE PREPARATION

3.1.1. This unit requires some provisions to be made to route the electrical to the canopy. Always check the local building codes for requirements on power hookups. Modify these installation instructions according to local requirements. Always use professional technicians for installing the power.

3.1.2. The contract administrator is responsible for all site preparation drawings. If the drawings are not available at the time of installation, contact the contract administrator.

3.2. CRITICAL FACTORS

3.2.1. Pad must be flat and level

3.2.2. Conduit stub up locations per print

3.2.3. Area on rear side of Kiosk to be clear and flat for ATM delivery

3.3. PERSONNEL NEEDED

3.3.1. Minimum of two workmen required

3.4. INSTALLER FURNISHED TOOLS, SUPPLIES AND EQUIPMENT

3.4.1. Flatbed or Cargo truck capable of carrying Canopy, ATM, and misc. tools

3.4.2. 5000# class forklift with forks no wider than 6” inches and at least 60” inches long (side-shift very helpful)

3.4.3. 2- 10’ foot ladders

3.4.4. Hammer drill with appropriate bit for anchors

3.4.5. Reciprocating saw (Sawzall) for misc. cutting

- 3.4.6. Socket and wrench set with extensions
- 3.4.7. Spirit level - 4'
- 3.4.8. Standard set of screwdrivers
- 3.4.9. Standard set of Allen wrenches
- 3.4.10. Electric and Cordless drill with various bits
- 3.4.11. Caulk gun (silicone caulk is provided in the hardware pack)
- 3.4.12. Extension cords, vacuum, brooms, cleaners, rags, etc.
- 3.4.13. Metal shims for leveling (1/16", 1/8", 1/4")

3.5. UNPACKING AND HANDLING

- 3.5.1. While transporting, uncrating, and handling, do not set anything on or against the canopy without appropriate padding.
- 3.5.2. The packaging should be examined when received for any shipping damage.
- 3.5.3. Remove the packing material at the site unless damage has occurred.
- 3.5.4. Transport to the site on the pallet
- 3.5.5. Remove from the truck and set in front of the island facing out.
- 3.5.6. When removing the packing material ensure no damage to the product while cutting off the plastic wrap.

3.6. ELECTRICAL REQUIREMENTS

- 3.6.1. The main electrical supply to the Canopy must have a main disconnect in a remote location.

3.7. CANOPY INSTALLATION

- 3.7.1. Voiding of Warranties: These installation instructions are an integral part of the product warranties given by Companion Systems to the customer. Proper operation and maximum performance of the product depend upon proper installation. In the event that the product is installed by the customer, or by anyone performing the installation at the customer request, in any manner other than in strict compliance with these instructions and specifications, all warranties express or implied, are void. All repairs and other modifications to the product necessary to bring the installation in compliance with these instructions will be at the customers' sole expense.
- 3.7.2. If there are any questions: please call (801) 936-8082. Ask for Customer Service.

3.7.3. Canopy installation is to be done in accordance to the drawing package provided by contract administrator or project manager.

3.8. Lamp and Sign Replacement

- 3.8.1. The lamps needed for the main sign in the canopy is a T-8 bulb (4) F40T8/SPX41, (4) F32T8/SPX41, (4) F25T8/SPX41
- 3.8.2. Access to the canopy lights is from the outside of the Canopy. There are four signs on the canopy.
- 3.8.3. To change the lights, the sign face has to be removed.
- 3.8.4. Remove the pin at the bottom center of the sign (See figure 1).
- 3.8.5. Using a Phillips screwdriver, loosen the clamps on the left side of the sign (see figure 1). The clamp is a "vise type" clamp, the screw will need to be turned counter clockwise until the clamp comes loose from the Kiosk (see figure 2). Do not loosen the clamp all the way as it will come apart.
- 3.8.6. Once the clamp is loose, the left side of the sign can be lifted away from the Kiosk.
- 3.8.7. With the left side of the sign pulled slightly away from the Kiosk, remove the side piece by pulling it out of the sign frame.
- 3.8.8. With the sidepiece removed, slide the sign out of the sign frame. Use care not to scratch the sign.
- 3.8.9. The lamps can now be replaced.
- 3.8.10. Reinstall the sign in the reverse order. Do not over tighten the clamps.

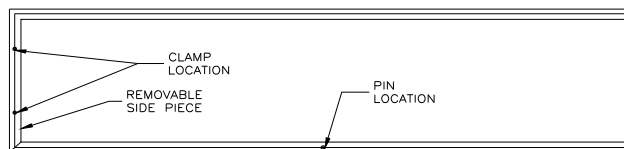


FIGURE 1